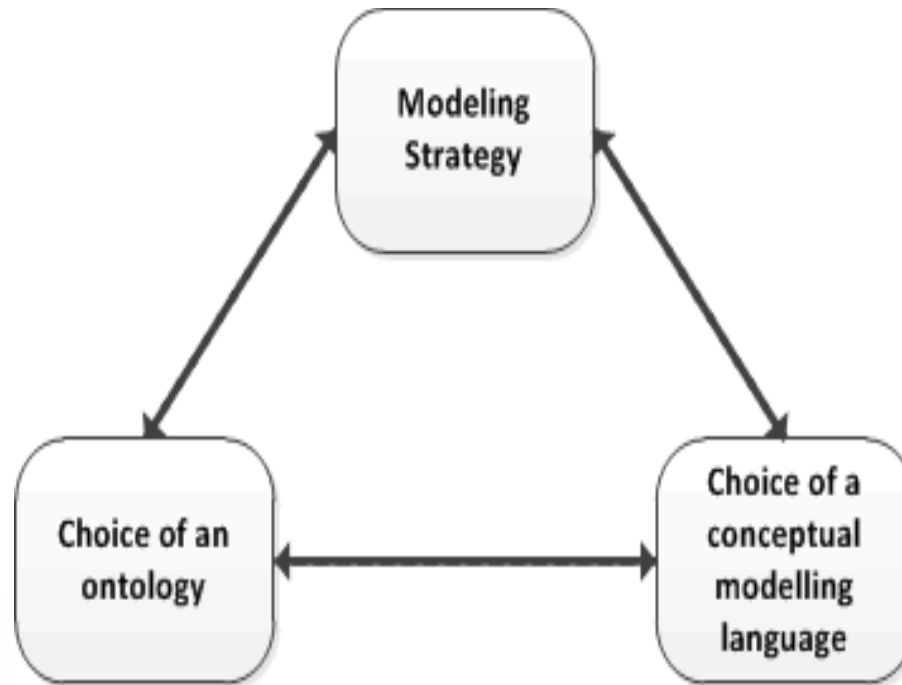


# 3D vs. 4D ontologies in enterprise modeling

Michaël Verdonck, Frederik Gailly and  
Geert Poels

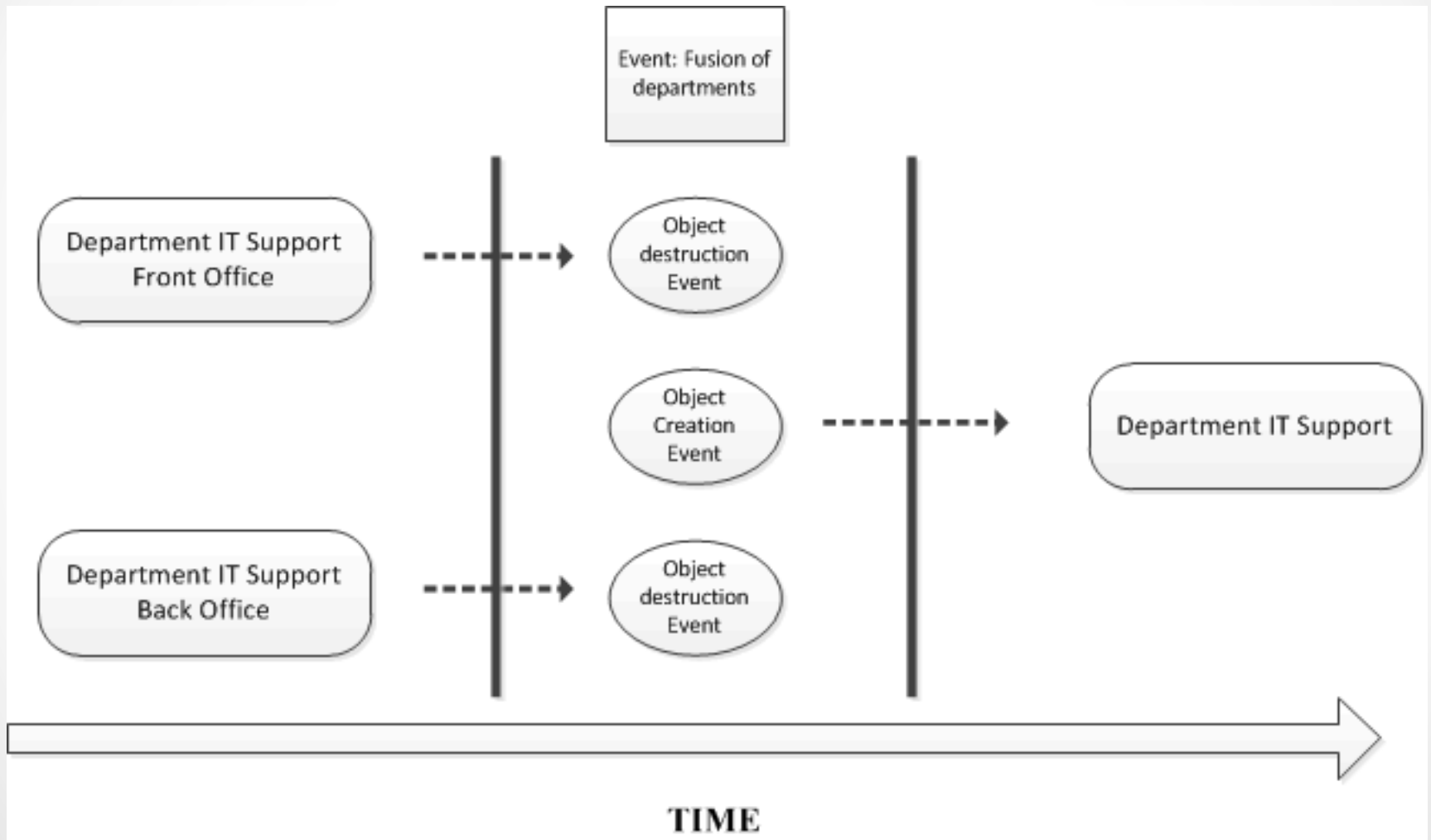
# Context, problem situation & goal



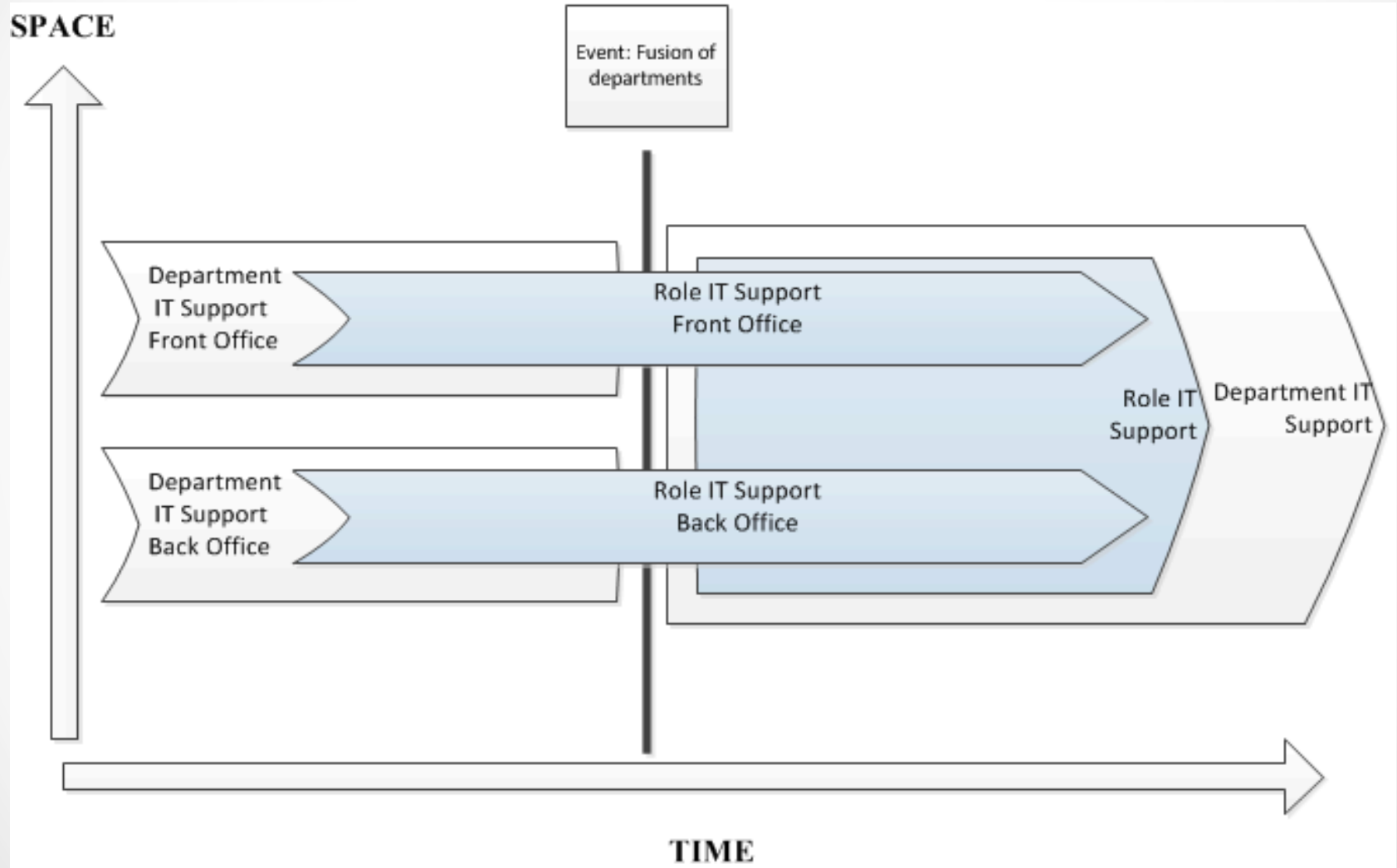
# The eUFO & BORO ontology

- Reference Ontologies
- Purpose & intended use of the ontologies
- 3D vs. 4D ontology

# Troy Enigma (eUFO)



# Troy Enigma (BORO)



# The Helena Enigma



- Helena was first owned by Archea
- Team linked to Helena
- Engineers working in the team
- Engineers have know-how about Helena
- Helena exists out of different kind of algorithms

# Conclusion

## eUFO

- Characterized by a high semantics' preciseness and richness of concepts
- Could prove very practical in re-engineering or optimizing the business organization and its operations.

## BORO

- Characterized by an integrated approach and a simplicity towards objects and processes
- Can be used to deliver a general overview of the whole organization and all of its components.



Questions?





# Why core ontologies?

- Core ontologies provide a broad view on the world
- Suitable for many target domains, so we don't have to focus on one single domain

# eUFO & UFO

UFO can be grouped into 3 compliance sets:

- UFO-A: an ontology of endurants
- UFO-B: an ontology of perdurants
- UFO-C: an ontology of social concepts

eUFO, based upon UFO-A and UFO-B, with the purpose to simplifying the terminology of UFO and harmonize it with informatics terminology

# Literature

## eUFO and UFO

- Guizzardi, G., Wagner, G., Falbo, R.D.A.: Towards Ontological Foundations for the Conceptual Modeling of Events Background : The Unified Foundational Ontology
- Guizzardi, G., Wagner, G.: Using the Unified Foundational Ontology ( UFO ) as a Foundation for General Conceptual Modeling Languages. Theory Appl. Ontol. Comput. Appl. SE - 8. 175–196 (2010).
- Guizzardi, G., Wagner, G.: Can BPMN Be Used for Making Simulation Models ? Organ. Model. Simul. EOMAS, vol, 100–115 (2011).

## BORO

- Partridge, C.: Business Objects: Re-engineering for Reuse. (2005).